

2016 Annual Impact Report

Message from the Executive Director

In 2016, CFSJ continued the steady growth that we've experienced since our 2009 launch. Our funds under management and the grants and scholarships awarded have increased in number and impact. We value the partnerships we've forged with our charitable fund holders. Together, with the support of and in collaboration with caring people and organizations in our region, we are maximizing the impact of South Jersey's generosity.



What We Do:

We help givers maximize the impact of their generosity through an array of personalized giving funds and advisory services.

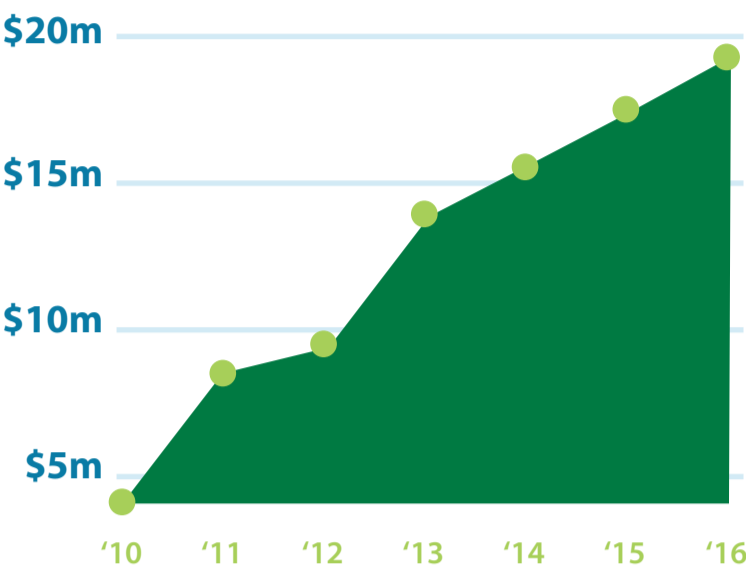
Who We Serve:

We work with givers who live in the southern eight counties of New Jersey and around the country who seek a simple but high-impact giving experience.

Why it Matters:

Educated givers drive impact in ways that generate lasting change. Joining with others multiplies the available resources that make a difference.

Asset Growth:



Impact:

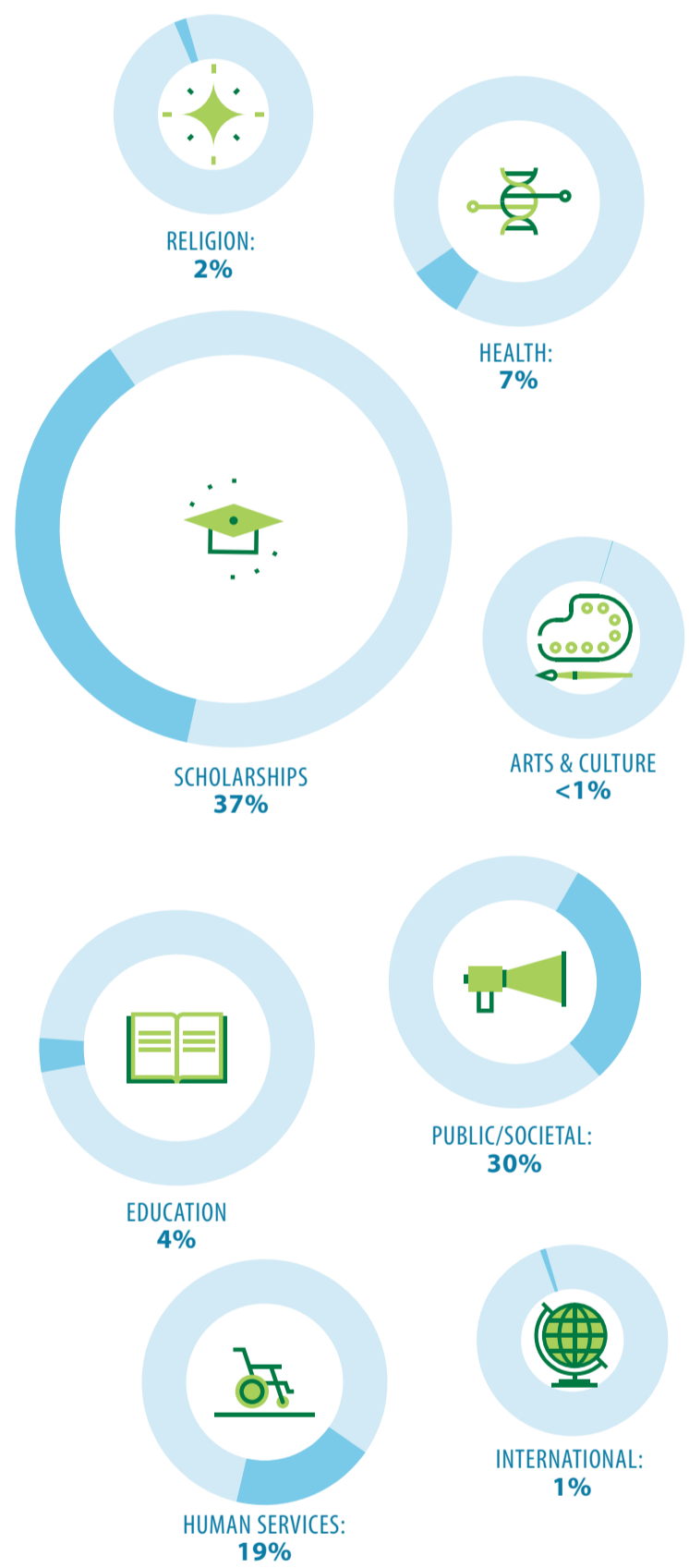


Grants and Contributions:

TOTAL GRANTS SINCE 2009 **\$6,942,954**

TOTAL CONTRIBUTIONS IN 2016 **\$3,041,842**

TOTAL GRANTS 2016 (% represented below) **\$1,658,852**



Funds:

Acuity Healthcare Employee Emergency Fund
Adam O'Brien Recovery Foundation Fund
Addison Quinn Foundation Fund
AJB Fund
An Anonymous Fund
Anonymous Corporate Fund
Anonymous Donor Advised Fund
Atlantic City Community Fund
Baiaida Family Charitable Fund
Barrington Schools Educational Foundation
Barbara and Jack Tarditi Fund
Benjamin S. Dorsett Fund
BSB Fund
Camden County Police Foundation
Cascade Aging Innovation Fund
Charles and Paula Ruffin Fund
Christopher Lawler Philanthropic Fund

Coach Frank DiLuzio Memorial Fund
E. Parker Worley and Lillian H. Worley Fund
Forrest Eichmann Music Scholarship Fund
Foundation for Educational Opportunity Scholarship Fund for Cumberland County
Girl Scouts of Central & Southern New Jersey Fund
Haddonfield Foundation Fund
Haddon Heights High School Top 10 Scholarship Fund
Harry and Edith Mason Scholarship Fund
Holman Emergency Lifeline Program Fund
Joseph S. Holman Fund
JWB Fund
Kaleb J. D. Holcombe Scholarship Fund
Kevin Connor Youth Ministry Scholarship
Love Like Carlos Memorial Fund
Mary J. Sherlach Memorial Scholarship Fund
Mary's Fund

Mayor Robert B. Chew & Mabel DeLong Chew Scholarship Fund
Mindy Holman/Frank Beideman Fund
Moorestown Charitable Works Club Fund
Plain Hope Fund
Ray of Hope Fund
RMM Fund
Sarah Tarditi Gallagher Memorial Fund
S.C. Holman Fund
Schwenk-Stetser Scholarship Fund
Senator Joseph A. Maressa Fund
South Jersey Fund
The Acorn Fund
Ventnor Community Endowment Fund
Ventnor Community Fund
Warker Family Fund
Weber Judd Fund

Sponsors and Funders:

Anonymous
Archer
Basecamp Ventures
BB+T
Bridgers Schill Wealth Management
Campbell Soup Foundation
Campbell Soup Healthy Communities Program
Charles and Paula Ruffin Fund
Citizens Bank
Colleen and John C. Connell
Community Foundation of New Jersey
DeSimone Family
Friedman LLP
Geraldine R. Dodge Foundation
Healey Education Foundation
Holman Automotive
Holman Beideman Fund
Jack and Barbara Tarditi/Conner Strong & Buckelew
Janney Montgomery Scott LLC
Kulzer & DiPadova P.A.
Land Dimensions
Lois Greco and Family
Lourdes Health System
Merriken Financial Group, Inc

Mesticelli Barnes Dental Associates
Moorestown Community House
Moorestown Friends School
Neumann University
Pepe and Peg Piperno
Porsche of the Main Line
Pricewaterhouse Coopers LLC
Republic Bank
Rowan University
Rutgers University - Camden
Samaritan Healthcare & Hospice
Sensational Host
SJ Magazine
Subaru of America
Tabula Rasa HealthCare
TD Bank
TD Charitable Foundation
The Atkinson Family
UBS Institutional Consulting
Virtua
Visit South Jersey
Weber Gallagher Simpson Stapleton Fires & Newby LLP
Wells Fargo Bank NA
Wells Fargo Regional Foundation

Board:

John C. Connell, Esq., **CHAIR**
Kyle D. Ruffin, **VICE CHAIR**
Vaughn R. Schill, **TREASURER**
T. Christian Rollins, **SECRETARY**
Melinda K. Holman, Co-founder / Former Chair
Jack Tarditi, Co-founder / Former Chair
Joseph C. Atkinson
Carl H. Bagell
The Honorable Raymond A. Batten
Alisa Cooper
Theresa DiVietro
Lois W. Greco
Rev. Douglas C. Halvorsen
Wanda P. Hardy
Mark S. Hodges
Jill Lombardo-Melchiorre
Joseph P. Tredinnick